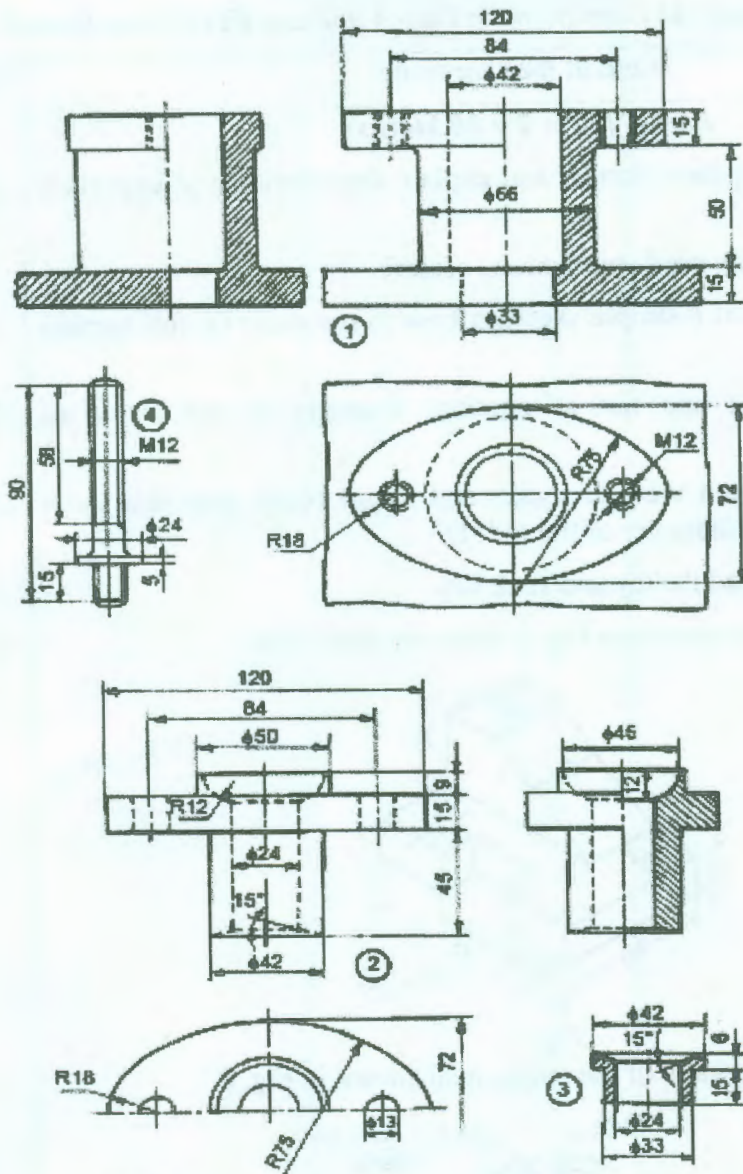




**Part-B (40 Marks)**

11. Assemble the parts of the stuffing box shown in Fig. 3. And draw  
 (i) Half sectional front view  
 (ii) Top view

40 5 3 2



Parts list

Part No.	Name	Matl	Qty
1	Body	CI	1
2	Gland	Brass	1
3	Bush	Brass	1
4	Stud	MS	2
5	Nut, M12	MS	2

Fig. 3. Stuffing Box

M: Marks; L: Bloom's Taxonomy Level; CO: Course Outcome; PO: Programme Outcome

S. No.	Criteria for questions	Percentage
1	Fundamental knowledge (Level-1 & 2)	27
2	Knowledge on application and analysis (Level-3 & 4)	6
3	*Critical thinking and ability to design (Level-5 & 6) (*wherever applicable)	67